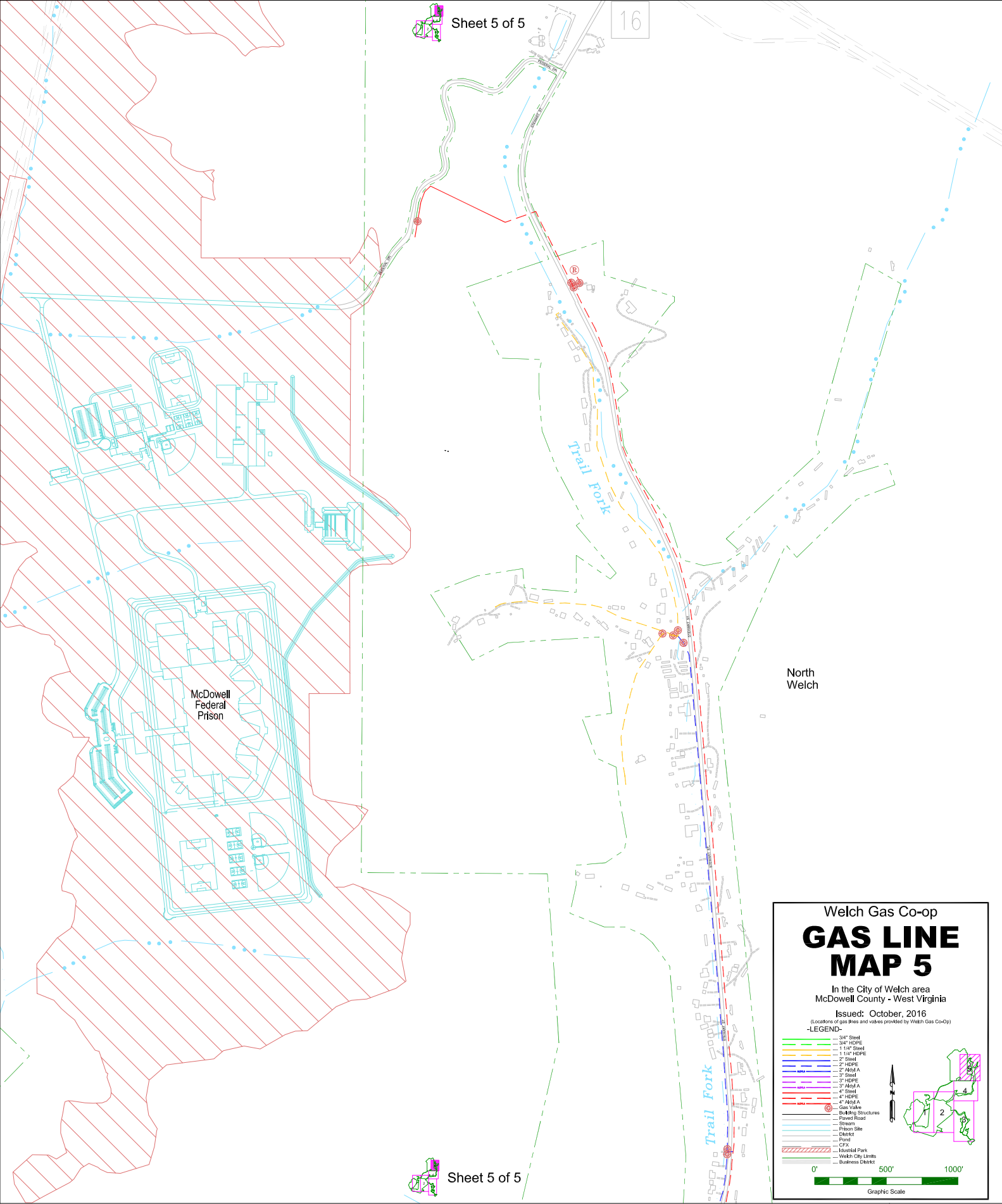




Sheet 5 of 5

16



Sheet 5 of 5

North Welch

Welch Gas Co-op  
**GAS LINE MAP 5**  
 In the City of Welch area  
 McDowell County - West Virginia  
 Issued: October, 2016  
(Locations of gas lines and valves provided by Welch Gas Co-op)

**-LEGEND-**

- 3/4" Steel
- 3/4" HDPE
- 1 1/4" Steel
- 1 1/4" HDPE
- 2" Steel
- 2" HDPE
- 2" Alloy A
- 3" Steel
- 3" HDPE
- 3" Alloy A
- 4" Steel
- 4" HDPE
- 4" Alloy A
- Gas Valve
- Building Structures
- Paved Road
- Stream
- Prison Site
- District
- Pond
- CFX
- Unshaded Park
- Welch City Limits
- Business District

0' 500' 1000'  
 Graphic Scale